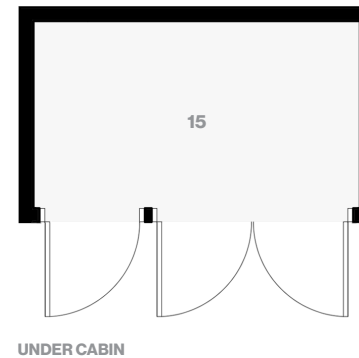
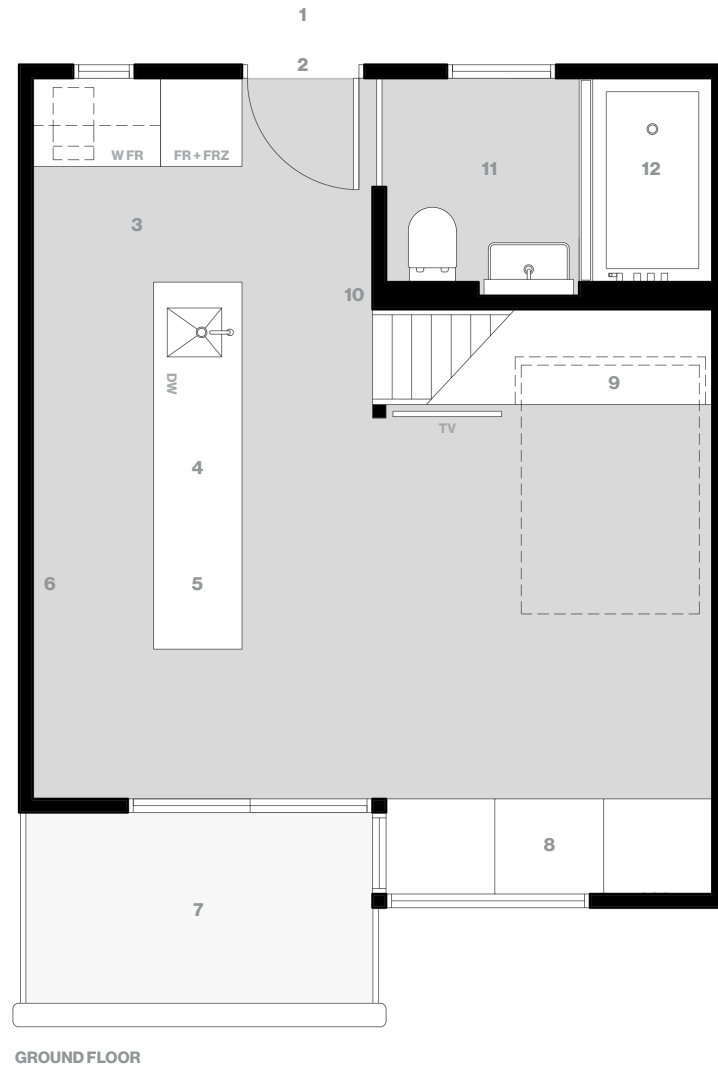


Floor Plan



Cedar Cabin
by Robyn Dyke, Nicholas Gurney
 Riverside, 8/1 Diggings Terrace
 Thredbo NSW 2625

Architect: DJRD, 1994
Design Architect: Robyn Dyke
 1 Loft Bed, 1 Bath, Open Plan Cabin
 Total area: 47.5 sq m (511 sq ft)
 Leasehold: Kosciuszko Thredbo Pty Ltd

Designer: Nicholas Gurney, 2018
Interior Designer: Monique Easton
 Internal area: 40 sq m (431 sq ft)
 Store area: 3.75 sq m (40 sq ft)
 External balcony: 3.75 sq m (40 sq ft)

- 1 Seat and Ski Rack
- 2 Secure Key Code Entry
- 3 High Spec F&P Kitchen
- 4 Custom Steel Bench
- 5 Dining

- 6 Drying Hooks & Vents
- 7 Viewing Balcony
- 8 Lounge Window Seat
- 9 Drop Down Bed
- 10 Smart Heating/Cooling

- 11 Bathrm w/ u/fl Heating
- 12 Onsen bath
- 13 Loft Bedrm w/ Sitting
- 14 Mural by Shal
- 15 Secure Storage